

WHAT ARE MODELS FOR AGING IN PLACE?

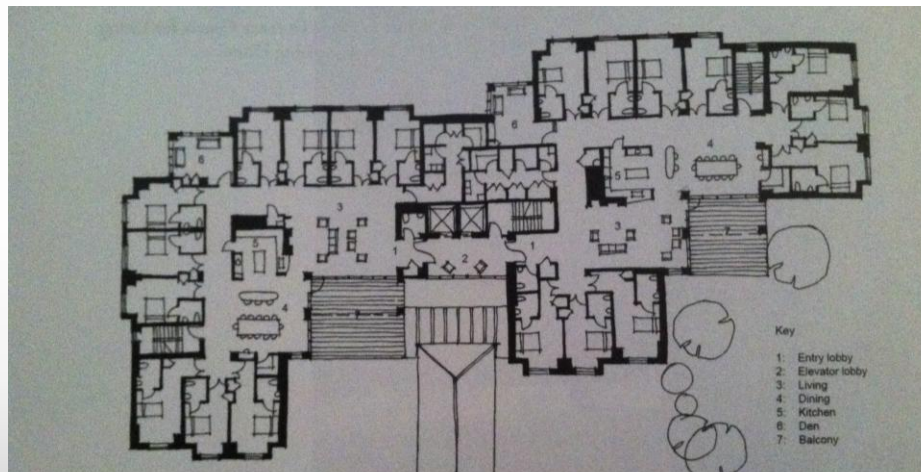
A Study of Leonard Florence Center for Living

- Chelsea, Massachusetts
- Design Firm: DiMella Schaffer
- 1.9 Acre Site
- 14,600 Sq. Ft. Building Footprint



Green House Concept

- Each household has a distinct front door, social or public space, living or hearth room, private space and resident bedrooms.



Philosophy of Care



- Object is to provide as “home-like” environment and care program as possible
- Staff are considered “Universal” meaning they cook, serve meals, provide care, and clean.
- Small number of staff to match the small number of residents which creates a family atmosphere.
- Ground level includes café/deli, spiritual worship place, spa, and salon open to residents and neighbors

Sustainability

- Water conserving fixtures throughout project
- High efficiency mechanical systems
- Well-insulated exterior building skin
- High performance windows
- Large windows allowing natural light

SOURCES

Anderzhon, Jeffrey W. Design for aging. Hoboken, N.J.: John Wiley & Sons, 2012. Print.

Baucom, Alfred H and Robert J Grosch. Hospitality design for the graying generation. New York: Wiley, 1996. Print.